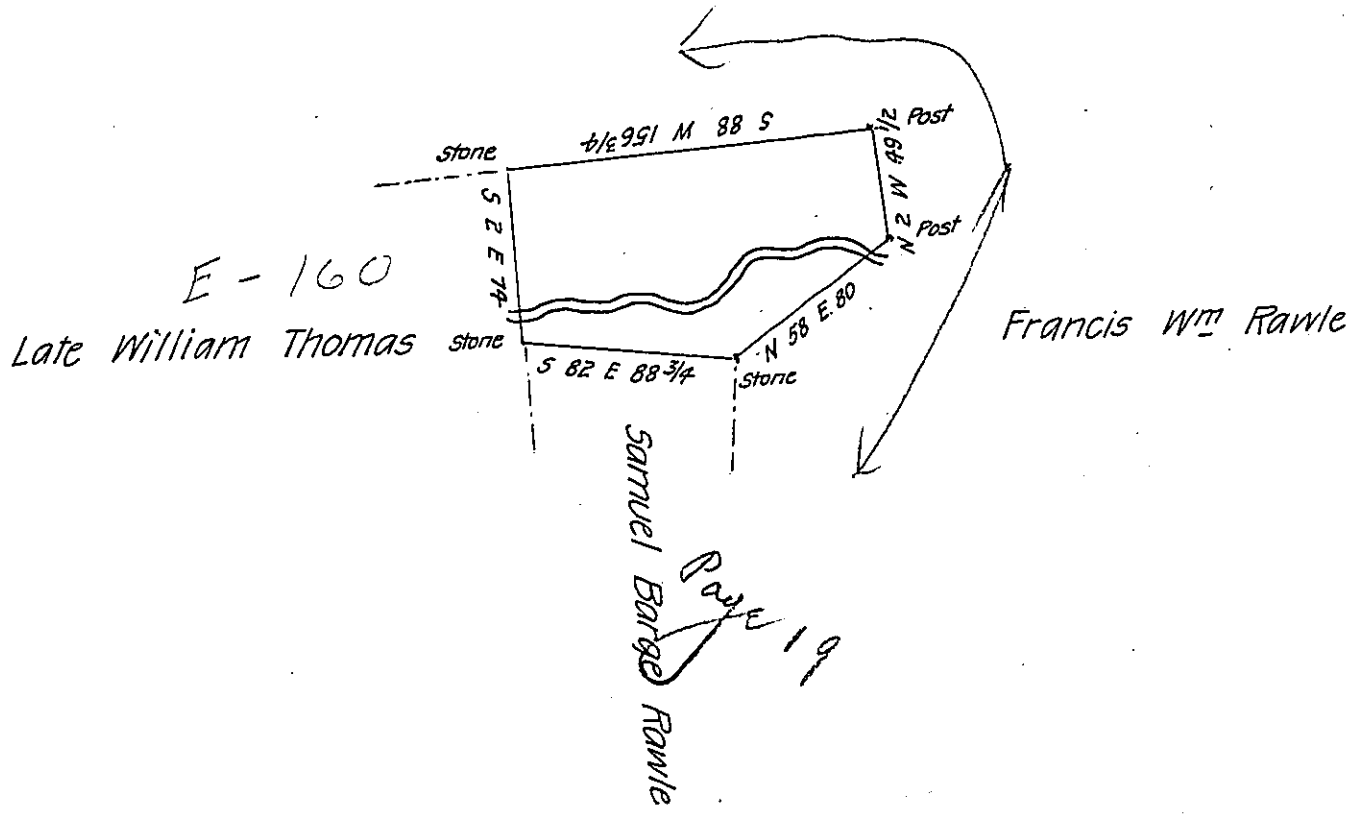


Francis Wm Rawle



By virtue of a warrant dated the 15th February 1773 surveyed
 the 25th July 1794 to John Roberts the above described tract of land
 situate on a small branch emptying into Lehi-between Lizard Creek
 and Mahoning-in Penn Township in the County of Northampton
 Containing seventy acres seventy perches and the allowance of six
 P. Cent &c.

P-Geo. Palmer D. S.

To Daniel Brodhead Esquire
 Surveyor General.

IN TESTIMONY that the above is a copy of the original remaining on file in
 the Department of Internal Affairs of Pennsylvania, made
 conformably to an Act of Assembly approved the 16th day of
 February, 1833, I have hereunto set my Hand and caused
 the Seal of said Department to be affixed at Harrisburg,
 this tenth day of October 1906.

Isaac C. Brown
 Secretary of Internal Affairs.